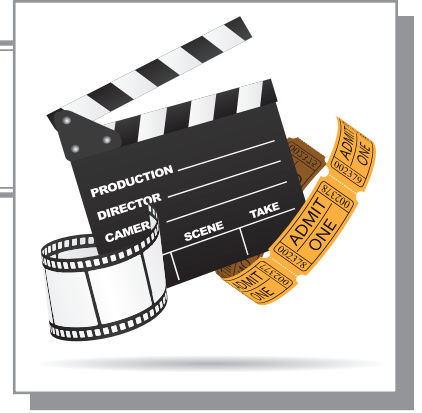

Vocabulary of Film Words With Definitions



Shots

Extreme close-up: The subject is much larger than the frame; provides more detail than a close-up.

Close-up: The subject is as large as or larger than the frame; reveals much detail.

Medium close-up: The subject is closer than a medium shot and further than a close-up.

Medium shot: A camera shot from a medium distance, usually showing the characters from the waist up; allows the audience to see body language, but not as much facial expression.

Long shot: A camera shot from a great distance, usually showing the characters as very small in comparison to their surroundings.

Wide shot (also called establishing shot): The first shot of a new scene and establishes location.

Angles

Low angle: A low angle places camera below the character. This exaggerates the importance of the subject, making that character appear larger than life.

Dutch angle (also called canted angle or canted shot): This shot is tilted and is used when something crazy is about to happen.

High angle (also called bird's-eye view): The camera looks down at a character. This makes the observer feel more powerful than the character.

Camera Parts

Lens: An optical device used by a camera to focus an image.

Lens cap: A cap that fits over the lens to protect it.

Zoom button: A button on the camera that helps you zoom in or zoom out.

Record button: The button on the camera that you press to film.

Viewfinder: The small video screen that shows the camera user how the images will appear in the film.

Firewire / Capture cable: The cable used to transfer the video clips to the computer.

Tripod Parts

Shoe: The connector that attaches the camera to the tripod.

Tripod head: The top of the tripod. The shoe fits into the head.

Leg locks: The clips that lock the legs in place when you make them longer.

Pan-handle: The handle that helps you pan the camera back and forth.

(continued)

Vocabulary of Film Words With Definitions (Continued)

Filmmaking

Script writing: The act of writing a script for a film.

Storyboarding: Creating images of the shots you plan to shoot in your film.

Plotting: Planning the storyline. What happens in the beginning, middle, and end.

Editing Terms

Cut: You cut when you delete part of a clip.

Crop: When you crop a clip, you keep the cropped part and the rest is deleted.

Title: The name of the film shown as text on the screen.

Credits: The actors, locations, and acknowledgements shown as text on the screen.

Digital effects: Changes made by the editor to the appearance of the film. The effects available depend on the digital editing program you are using.

Footage: The full collection of clips shot while filming.

Rough cut: The first assemblage of clips prior to editing.

Transitions

Cut: A transition that shifts abruptly from one shot to another.

Dissolve: A transition in which one shot appears to dissolve into the next shot, with the images of the second shot gradually replacing the first shot.

Wipe: A transition where one shot appears to wipe over and fully replace the previous shot, defined by a definite border that moves across or around the frame.

Note: Many of these definitions were taken from the Internet Movie Database Dictionary <http://www.imdb.com/glossary/A>